



Bathing establishment Fact sheet

Name of bathing establishment	Graziella
Address	Lungomare Colombo 6
City	Castiglioncello – Rosignano (Li)
Contacts	Tel. +39 3404063253 email: bagnigraziella2019@gmail.com
Website	Not detected

TESTED BY: [Handy Superabile Social Promotion Association](#) in summer 2023

Please note The following information refers to the verification date shown at the bottom of each sheet. The Association is not responsible for any significant changes made to the property after the visit.

Summary

Bathing establishment Fact sheet.....	1
Arrival at the facility.....	2
Private/public parking.....	2
Pathway from the parking lot to the main entrance.....	2
Reception welcome.....	3
Bar/restaurant.....	4
Internal pathways and common services.....	5
Internal pathways.....	5
Toilet and shower accessible to guests with reduced mobility.....	5
Changing room.....	7
Beach.....	7
Children's play area.....	9
Pool.....	9
Medical practices/health facilities.....	9

Project carried out with the contribution of




Presidenza del
Consiglio dei Ministri
Ministro per la disabilità



Arrival at the facility

Private/public parking

Presence of private parking	NO
Presence of parking space reserved for people with disabilities	YES
Type of parking lot	ASPHALT
Public parking nearby	YES
	

Path from the parking lot to the main entrance

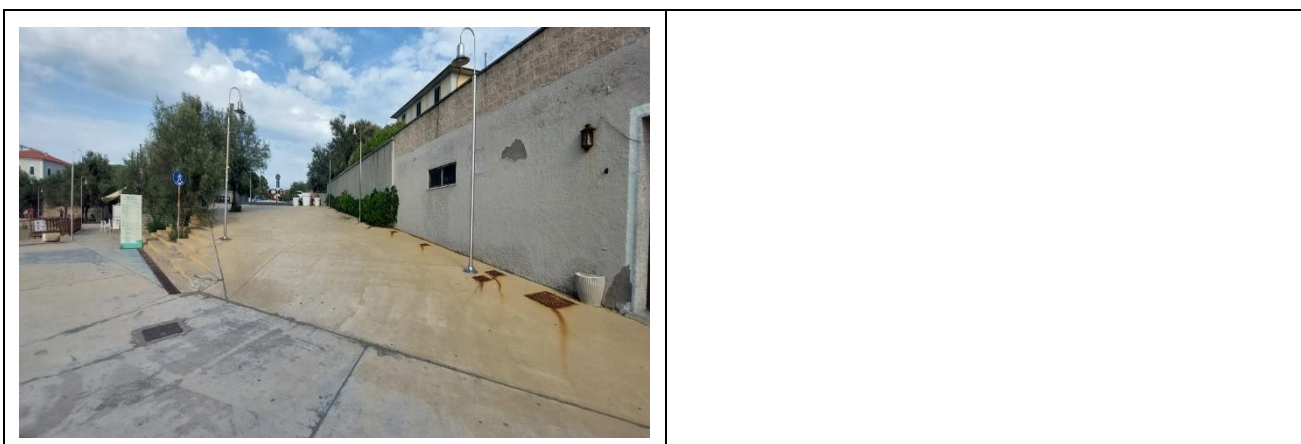
Path from the parking lot to the entrance	via ramp length 26 m, width greater than 90 cm slope 2.5%
There are indicators and tactile maps	NO
Useful width of door/entrance passage	greater than 90 cm



Project promoted by



Regione Toscana



Reception welcome

Umbrella booking system	<input type="checkbox"/> Via the web <input checked="" type="checkbox"/> Via telephone <input checked="" type="checkbox"/> On site
Presence of multilingual staff	YES
Presence of plant plan with legend of services available	NO
Presence of visuo-tactile map	NO
Noticeboard/information panel sat an average height of 130 cm in a well-lit area and a character size of at least 14 dpi with a contrast ratio greater than 4.5:1	NO
The staff has undergone training on welcoming people with various disabilities	NO

Project carried out with the contribution of

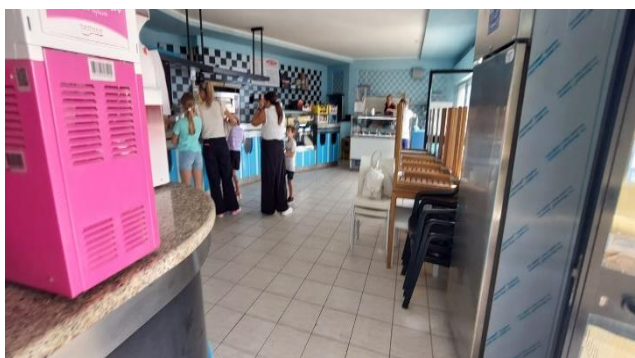
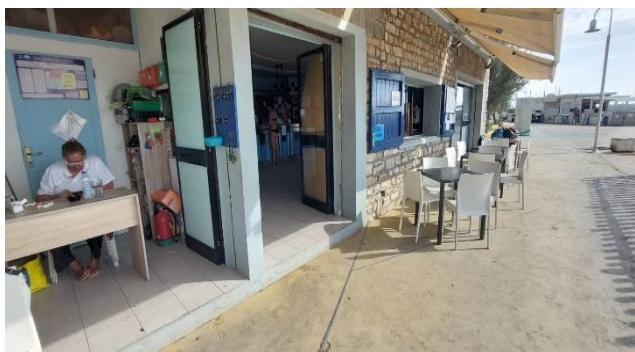


Presidenza del
Consiglio dei Ministri
Ministro per la disabilità



Bar/restaurant

Type of venue	Snack bar
Access to the venue	with one step
Useful width of door/entrance passage	greater than 90 cm
Bar counter	height greater than 100 cm
Type of tables	4 legged
Space under the floor tables	greater than 70 cm
Multilingual menu	YES
Menu with large print characters	NO
Braille menu	NO
Table service for people with disabilities	YES
Availability of food for celiacs	<input type="checkbox"/> bread <input type="checkbox"/> pasta <input type="checkbox"/> cookies <input type="checkbox"/> ice creams <input checked="" type="checkbox"/> pre-packaged foods





Internal pathways and common services

Internal pathways

Indicate whether the pathways connecting the entrance to the beach are flat or with ramps in addition to those already described

flat paths and with a 32 m long ramp over 90 cm wide with a 3% gradient





Toilet and shower accessible to guests with reduced mobility

Number of toilets accessible/usable by guests with reduced mobility	1
Access to the venue	flat
Useful width of entrance door	greater than 90 cm
Toilet height	50cm
Open front toilet seat	NO
Flexible shower next to the toilet	YES
Free space on the sides of the toilet	to the left greater than 90 cm To the right greater than 18 cm Front greater than 90 cm





Electric bell/telephone	NO
Washbasin with space underneath for a wheelchair	greater than 70 cm
Height from the ground to the lower edge of the mirror	not sufficient for use by people in a wheelchair
Baby changing table	NO
	
Shower accessible to guests with reduced mobility available	YES separated from the toilet room
Access to the shower room if separated from the toilet room	flat
Useful width of entrance door/gap if separated from the toilet room	greater than 90 cm
Shower type	with access box 90 cm and dimensions 170 x 270 cm
Floor-level shower	NO with 5cm high step
Shower chair	missing
Support handle	NO
Presence of shower head or latch	fixed shower head
Electric bell/telephone	NO





Changing room

Changing room accessible to guests with reduced mobility available	NO
--	----

Beach

Type of beach	sand mixed with gravel
Access to the beach	via ramp length 32 m, width greater than 90 cm slope 3%
Walkway to reach the umbrellas	YES
Type of walkway	in concrete
Walkway width	Greater than 90 cm

Project promoted by



Regione Toscana

<p>Removable Platform between the walkway and the umbrella station to facilitate the passage and parking wheelchair</p>	<p>YES</p>
<p>Amphibious beach chair available for helping people with reduced mobility to enjoy swimming (owned by the establishment or by association)</p>	<p>YES</p>

Project carried out with the contribution of



Presidenza del
Consiglio dei Ministri
Ministro per la disabilità

Project promoted by



Regione Toscana

Children's play area

Children's play area	missing
----------------------	---------

Pool

The property has a swimming pool	NO
----------------------------------	----

Medical practices/health facilities

Hospitals near the facility	Cecina Hospital – tel 0586 61411 - 15 km
Other healthcare facilities	ASL Rosignano Via A. Moro

TESTED BY: Handy Superabile - Social Promotion Association - in summer 2023

Project carried out with the contribution of



Presidenza del
Consiglio dei Ministri
Ministro per la disabilità